

# LA NATURA SEI TU.



Diventa Citizen Scientist e tutela la biodiversità.

<http://www.csmon-life.eu>

Partner



DIPARTIMENTO  
DI BIOLOGIA AMBIENTALE



**CSMON-LIFE** targeted untrained citizens, involving them in monitoring several target species for raising awareness and collecting data on several environmental issues:

Climate change

Air quality

Rare species

Invasive alien species

Marine ecosystems

Partner



DIPARTIMENTO  
DI BIOLOGIA AMBIENTALE

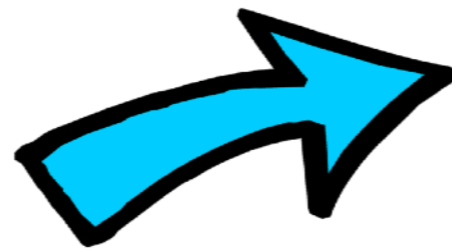
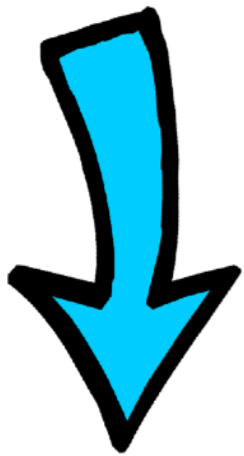












## CSMON-LIFE: some figures

Ca. **15000** citizens involved

Ca. **25.000** observations collected

**15-20.000.000** citizens informed through media activities

...and several BioBlitz, “Scoprinatura” events, two contests and “weeks with the exper” for schools, networking, and much, much more.

### Partner



DIPARTIMENTO  
DI BIOLOGIA AMBIENTALE







Lombardia Region is replicating the approach of CSMON-LIFE in its regional biodiversity network, the “Osservatorio Regionale della Biodiversità”.

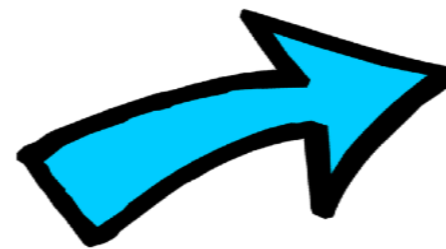
LIFE project PAN-LIFE, which operates in Calabria, replicated the approach of CSMON-LIFE in its involvement activities.

The project WikiPlantBase is working for implementing the CSMON-LIFE technology in its system, hence allowing an increased data flow from “casual” users.





**20 target species**  
**600 untrained participants**  
**30 locations**  
**1 hour**



**2000 observations**  
**25% error rate**

Partner



DIPARTIMENTO  
DI BIOLOGIA AMBIENTALE





Partner



DIPARTIMENTO DI BIOLOGIA AMBIENTALE





**Yes, BUT...**

Partner





## Partner



DIPARTIMENTO  
DI BIOLOGIA AMBIENTALE





## Lesson learnt:

“Local” environmental issues are more “attractive” than global issues

### Partner





## Lesson learnt:

When developing top-down activities, a correct balance between education and science is mandatory.

### Partner





Partner



DIPARTIMENTO  
DI BIOLOGIA AMBIENTALE



## Lesson learnt:

In Italy social media, at the moment, do not perform as “classic” media do in engaging citizens.

furthermore.....

### Partner





## Partner



## Lesson learnt:

We do not only need to provide a general feedback, but also demonstrate that citizen activities lead to a scientific and/or policy outcome (the latter especially at local level)

### Partner





Partner



## Lesson learnt:

It's citizen, but also science.  
Without a solid validation pipeline, data will be useless for  
research and decision making.

### Partner





3 ITA 08:43 ec.europa.eu 99%

About this site | Contact | Sitemap | Search | Legal notice | Cookies

European Commission ENVIRONMENT LIFE Programme

European Commission > Environment > LIFE Programme

HOME | ABOUT LIFE | NEWS | FUNDING | PUBLICATIONS | TOOLKIT | CONTACT | SITE MAP

25 Years of LIFE

Projects by theme

- Nature, Biodiversity
- Environment
- Climate Action
- Info, Governance

Projects search

- Project database
- Project publications

More

- Best projects
- Integrated projects
- Other projects

Welcome to LIFE

LIFE is the EU's financial instrument supporting environmental, nature conservation and climate action projects throughout the EU. Since 1992, LIFE has co-financed more than 4500 projects. For the 2014-2020 funding period, LIFE will contribute approximately €3.4 billion to the protection of the environment and climate.

[Read more >>](#)

New LIFE Regulation 2014-2020

[Read more >>](#)

Highlights

Member States to benefit from over €222 million investments for environment, nature and climate action

Events

- 15-17 November: Nature in the City workshop Santander, Spain
- 16-17 November: Clean Air Forum Paris France

Italian communities prepare for the flood

22 November 2017 Climate change is making floods in the north of Italy more frequent and less predictable. As part of the LIFE-funded PRIMES project, communities are learning to read early warning systems and respond together to future emergencies.

This month, dozens of citizens and volunteers in the region of Emilia-Romagna, around Bologna, in Italy, took part in a crisis simulation. Beneficiaries of the LIFE PRIMES project evacuated participants from their homes, and students from a school leaving

[Preventing flooding risk](#)



DIPARTIMENTO DI BIOLOGIA AMBIENTALE



Le popolazioni italiane di barbo comune (*Barbus plebejus*) e di barbo canino (*Barbus meridionalis*, sin. *B. caninus*) risultano in crescente rarefazione come riconosciuto dall' aggiornamento della Lista Rossa IUCN dove lo stato di rischio delle due specie è stato elevato rispettivamente a "vulnerabile" e "in pericolo". Nella regione Emilia-Romagna il costante peggioramento quali - quantitativo delle popolazioni di entrambe le specie, richiede interventi mirati sia a livello ambientale sia in termini di attività ittogeniche ex-situ.

## Lista specie

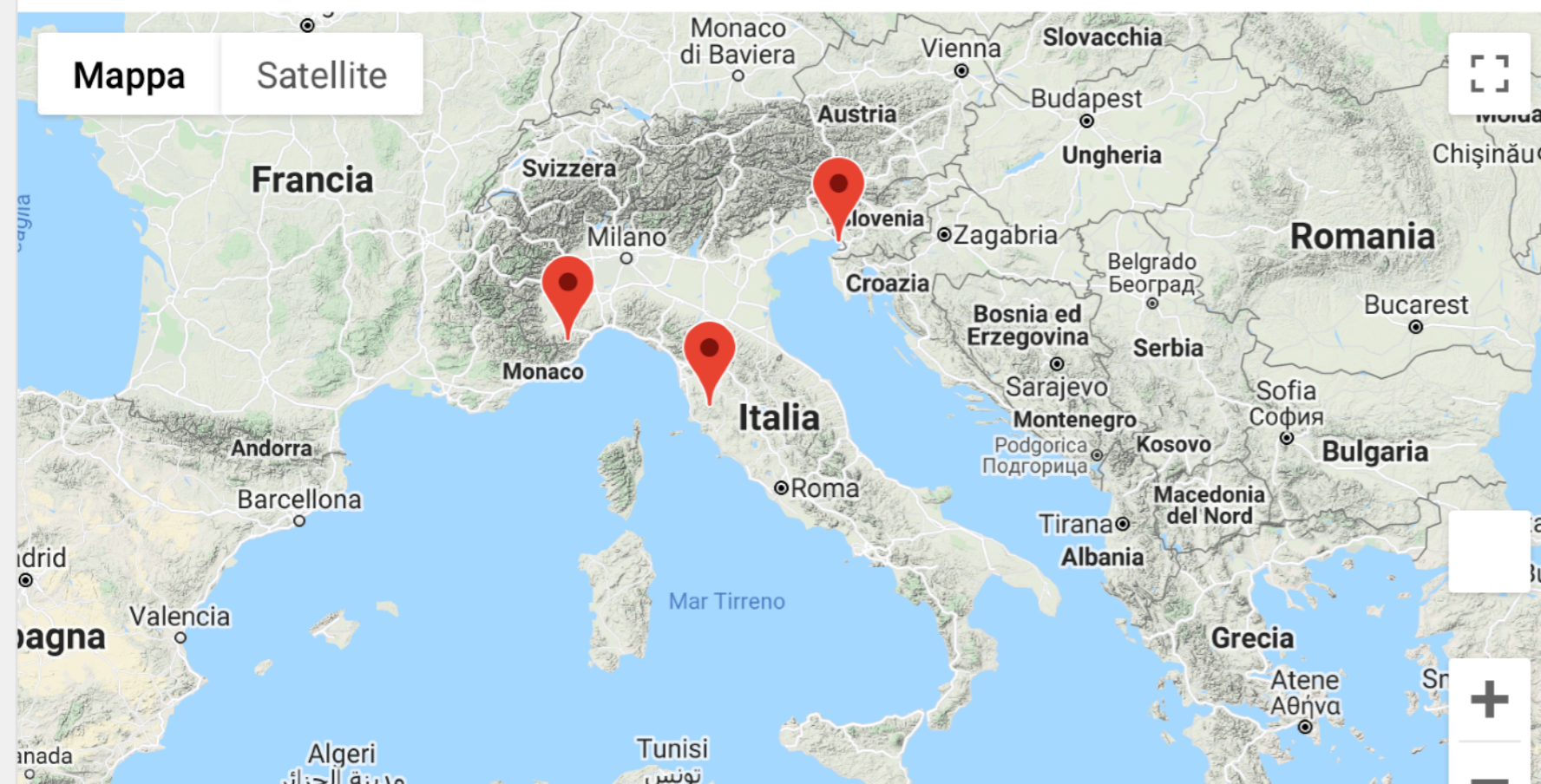
### **Barbo canino**

[Barbus meridionalis Bonaparte, 1839](#)

### **Barbo comune**

[Barbus Plebejus Bonaparte, 1839](#)

## Mappa segnalazioni



## LIFE13 ENV/IT/842

Progetto CSMON-LIFE, Cofinanziato dalla Commissione Europea nell'ambito del Programma LIFE+.

## Newsletter CSMON-LIFE

\* obbligatorio

Indirizzo Email

Iscrivimi

ULTIMA SEGNALAZIONE







## Partner



DIPARTIMENTO  
DI BIOLOGIA AMBIENTALE





CSMON-LIFE (LIFE13 ENV/IT/842)

<http://www.csmon-life.eu>

[info@csmon-life.eu](mailto:info@csmon-life.eu)

#csmonlife

Partner

